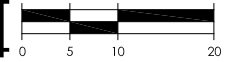


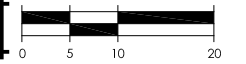
VIEW AT ENTRY AND OUTDOOR POOL PATIO



	Home 2 by Hilton Redlands, CA for: CVG Hospitality, Inc.	Date: MARCH 6, 2018 Scale: N.T.S. Sheet:
		A4.3



VIEW FROM OFF RAMP



	Home 2 by Hilton Redlands, CA for: CVG Hospitality, Inc.	Date: MARCH 6, 2018 Scale: N.T.S. Sheet: A4.4
--	--	--



CORNICE AT PARAPET

ALUMINUM WINDOWS WITH INTEGRAL PTAC LOUVER

SMOOTH STUCCO

FLUSH FIBER CEMENT SIDING

WINDOW SILL AND METAL AWNING AT LIGHT COLORED STUCCO SECTIONS

INTERNALLY LIT GLASS CROWN

+10' HIGH SPLIT FACED CMU WALL WITH METAL CANOPY ABOVE FOR PRIVACY/SOUND FROM OFF-RAMP AT PROPERTY LINE PER MITIGATION MEASURE N-1.

OUTDOOR POOL AND PATIO

SMOOTH FIBER CEMENT OR SMOOTH STUCCO TRIM BAND

STONE VENEER BASE

METAL ENTRY CANOPY WITH LOUVERS AND ANGLED SUPPORT RODS

FENCE OR LOW WALL AT OUTDOOR SEATING

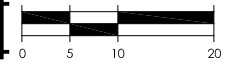
STONE VENEER BASE AT COLUMNS

METAL ENTRY CANOPY WITH LOUVERS

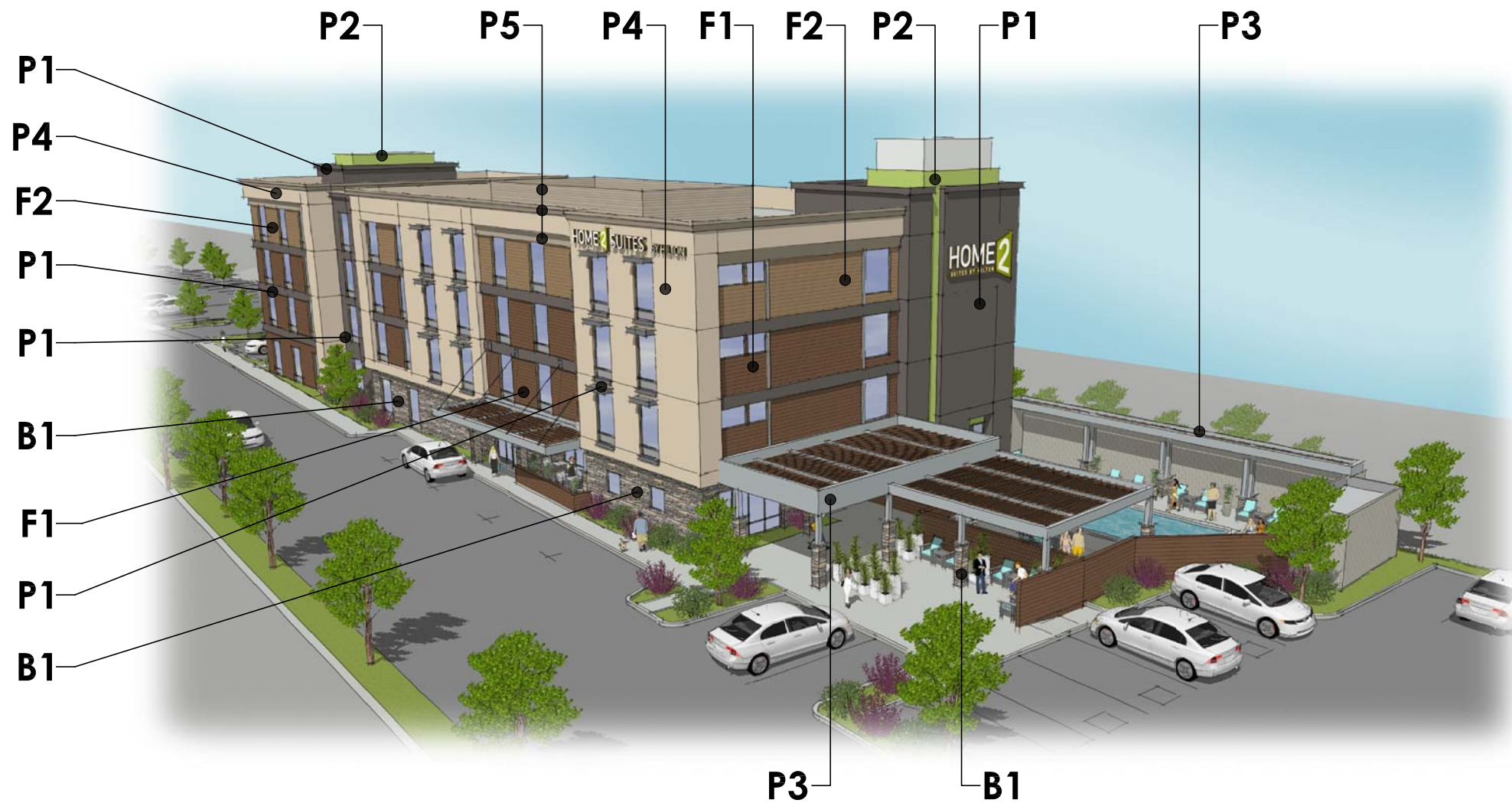
OUTDOOR SEATING

+6' HIGH PRIVACY FENCE AROUND POOL AND PATIO AREA

VIEW FROM ADJACENT PARKING LOT



	Home 2 by Hilton Redlands, CA for: CVG Hospitality, Inc.	Date: MARCH 6, 2018 Scale: N.T.S. Sheet: A4.5
--	--	--



P1
PAINTED EXTERIOR STUCCO
PAINTED METAL AWNINGS
 SMOOTH FINISH
 BENJAMIN MOORE
 2134-20 "MIDSUMMER NIGHT"



P2
PAINTED EXTERIOR STUCCO
 SMOOTH FINISH
 BENJAMIN MOORE
 2026-10 "LIME GREEN"



P3
PAINTED TRIM BAND
PAINTED METAL AWNINGS
 SMOOTH FINISH
 BENJAMIN MOORE
 2121-40 "SILVER HALF DOLLAR"



B1
STONE VENEER BASE
 CULTURED STONE
 SOUTHERN LEDGESTONE "FOG"



F1
FIBER CEMENT PANEL
 TRESPA FLUSH PANEL
 "ROMANTIC WALNUT"
 MATTE

F2
FIBER CEMENT PANEL
 TRESPA FLUSH PANEL
 "CLASSIC OAK"
 MATTE

P4
PAINTED EXTERIOR STUCCO
 SMOOTH FINISH
 BENJAMIN MOORE
 966 "NATURAL LINEN"



P5
PAINTED TRIM BAND
PAINTED METAL AWNINGS
 SMOOTH FINISH
 BENJAMIN MOORE
 HC-87 "ASHLEY GRAY"

PROPOSED COLOR & MATERIAL BOARD

	Home 2 by Hilton	Date: MARCH 6, 2018
	Redlands, CA	Scale:
	for: CVG Hospitality, Inc.	Sheet:
		A5.0



"GLASS CROWN"

CONTRASTING "BAND"

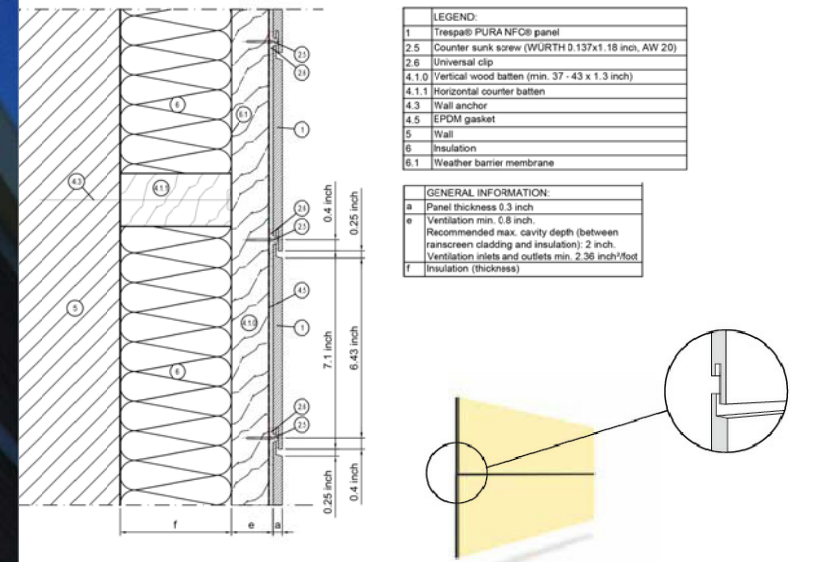
SIGNATURE HOME2 TOWER ("BEACON")

ALUMINUM WINDOWS WITH INTEGRAL PTAC LOUVER & NO TRIM AT WINDOWS

SMOOTH FIBER CEMENT OR SMOOTH STUCCO "ACCENT BAND"

FLUSH FIBER CEMENT SIDING AT RECESSES

SMOOTH STUCCO



FLUSH FIBER CEMENT SIDING DETAILS

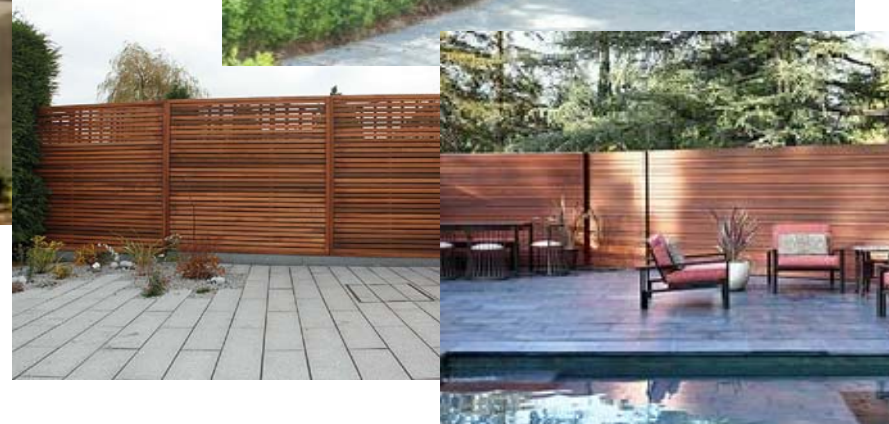


CANOPY COLUMNS WITH BASE



METAL ENTRY "CANOPY" WITH LOUVERS

STONE VENEER AT BASE



OUTDOOR SEATING AREAS

HORIZONTAL WOOD FENCE AT POOL AND OUTDOOR SEATING AREAS

DESIGN REFERENTS - HOME 2 BY HILTON

	<p>Home 2 by Hilton Redlands, CA for: CVG Hospitality, Inc.</p>	<p>Date: MARCH 6, 2018 Scale: N.T.S. Sheet: A6.0</p>
--	---	---