



1 NORTH ELEVATION
1/4" = 1'-0"



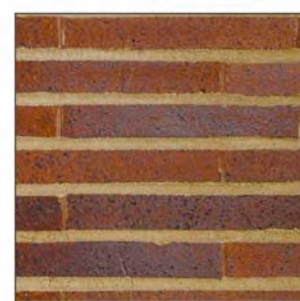
2 EAST ELEVATION
1/4" = 1'-0"

EM-4



RECLAIMED METAL
PANEL: CAR HOOD.

EWF-1



BELDEN, ROMAN BRICK
MEDIUM RANGE, SMOOTH
IRON SPOT. HORIZONTAL
MORTAR TO MATCH
LATICRETE "HEMP"
WEATHERED STRIKE JOINTS.
VERTICAL MORTAR TO MATCH
TERRA COTTA. JOINTS FLUSH
WITH FACE.

EWF-2



STUCCO FINISH -
TO MATCH
DRYVIT "TAMALE" 382.

EM-3



GC'S STEEL FABRICATOR:
RAW HOT ROLLED STEEL
WEXPOSED WELDS
CLEAR COAT FLAT FINISH

EWF-4



BORALL: "ALAMO"
MODULAR BRICK ON-FULL
HEIGHT WALLS, SACK RUB
FINISH.

EWF-6



STUCCO FINISH -
TO MATCH
DRYVIT "OYSTER SHELL" 456

EWS-2



KAWNEER - ALUMINUM
STOREFRONT SYSTEM
FINISH: #40 BLACK
ANODIZED AA-M10C21A44 /
AAM45C22A44
ARCHITECTURAL CLASS



Restaurant Support Office
6800 Bishop Road, Plano, TX 75024
Tele: 972-769-3557 Fax: 972-769-3101

Store:
Raising Cane's
1435 W. Lugonia Ave.
Redlands, CA 92374
Store #CO410
Prototype 2 HC
ERD 4.0

Architect Information:



Architectural
Solutions Group

38 EXECUTIVE PARK
SUITE 310
IRVINE, CA 92614
Contact: Jeff Lideman
(949) 450-7051
jlideman@pmdesign.com
Jeff Lideman, Architect

Conceptual Design

Revisions:

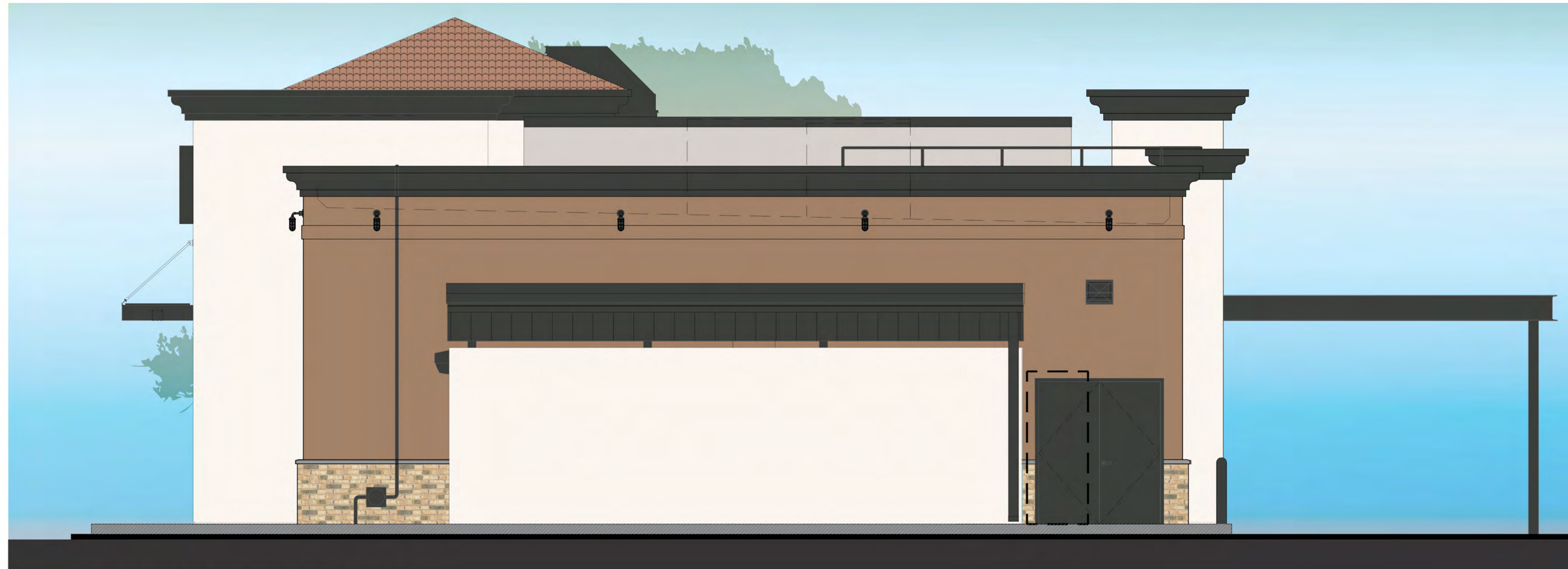
#	Date	Description
02.20.2019		Draft Elevations Revised
06.24.2019		CUP Re-Submittal
07.18.2019		CUP Re-Submittal

Sheet Title:

**EXTERIOR
ELEVATIONS**

Sheet Number:

A4.10



1 SOUTH ELEVATION
1/4" = 1'-0"



2 WEST ELEVATION
1/4" = 1'-0"

- | | | | | | | |
|--|---|--|---|--|--|---|
| <p>EM-4</p>  <p>RECLAIMED METAL PANEL: CAR HOOD.</p> | <p>EWF-1</p>  <p>BELDEN, ROMAN BRICK MEDIUM RANGE, SMOOTH IRON SPOT, HORIZONTAL MORTAR TO MATCH LATICRETE "HEMP" WEATHERED STRIKE JOINTS. VERTICAL MORTAR TO MATCH TERRA COTTA. JOINTS FLUSH WITH FACE.</p> | <p>EWF-2</p>  <p>STUCCO FINISH - TO MATCH DRYVIT "TAMALE" 382.</p> | <p>EM-3</p>  <p>GC'S STEEL FABRICATOR: RAW HOT ROLLED STEEL W/EXPOSED WELDS CLEAR COAT FLAT FINISH</p> | <p>EWF-4</p>  <p>BORAL: "ALAMO" MODULAR BRICK ON-FULL HEIGHT WALLS, SACK RUB FINISH.</p> | <p>EWF-6</p>  <p>STUCCO FINISH - TO MATCH DRYVIT "OYSTER SHELL 456</p> | <p>EWS-2</p>  <p>KAWNEER - ALUMINUM STOREFRONT SYSTEM FINISH: #40 BLACK ANODIZED AA-M10C21A44 / AAM45C22A44 ARCHITECTURAL CLASS</p> |
|--|---|--|---|--|--|---|



Restaurant Support Office
6800 Bishop Road, Plano, TX 75024
Tele: 972-769-3557 Fax: 972-769-3101

Store:
Raising Cane's
1435 W. Lugonia Ave.
Redlands, CA 92374
Store #C0410
Prototype 2 HC
ERD 4.0

Architect Information:
PM DESIGN
Architectural Solutions Group
38 EXECUTIVE PARK
SUITE 310
IRVINE, CA 92614
Contact: Jeff Liedeman
(949) 450-7051
jliedeman@pmdesign.com
Jeff Liedeman, Architect

Conceptual Design

Revisions:

#	Date	Description
02.20.2019	02.20.2019	Draft Elevations Revised
06.24.2019	06.24.2019	Draft Elevations Revised

Sheet Title:
EXTERIOR ELEVATIONS

Sheet Number:
A4.20



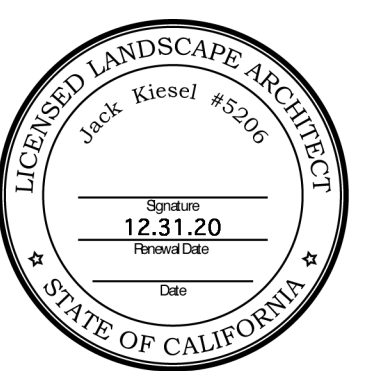
KIESEL DESIGN

Kiesel Landscape Architecture Inc.
422 E Main Street
Ventura, CA 93001
(p) 805.947.0730
Jack@kiesel.com
CL# 5206

**RC #410
Redlands**
1435 W. Lugonia Ave.
Redlands, CA 92374

Revisions:

#	DATE	NAME
5.6.19		CUP Submittal
6.24.19		CUP Submittal #2
7.18.19		CUP Submittal #3



Type: Conceptual Design

Initial Submittal Date:
May 6th, 2019

Drawn By:
NAME DATE
T. Slinger 07/2019

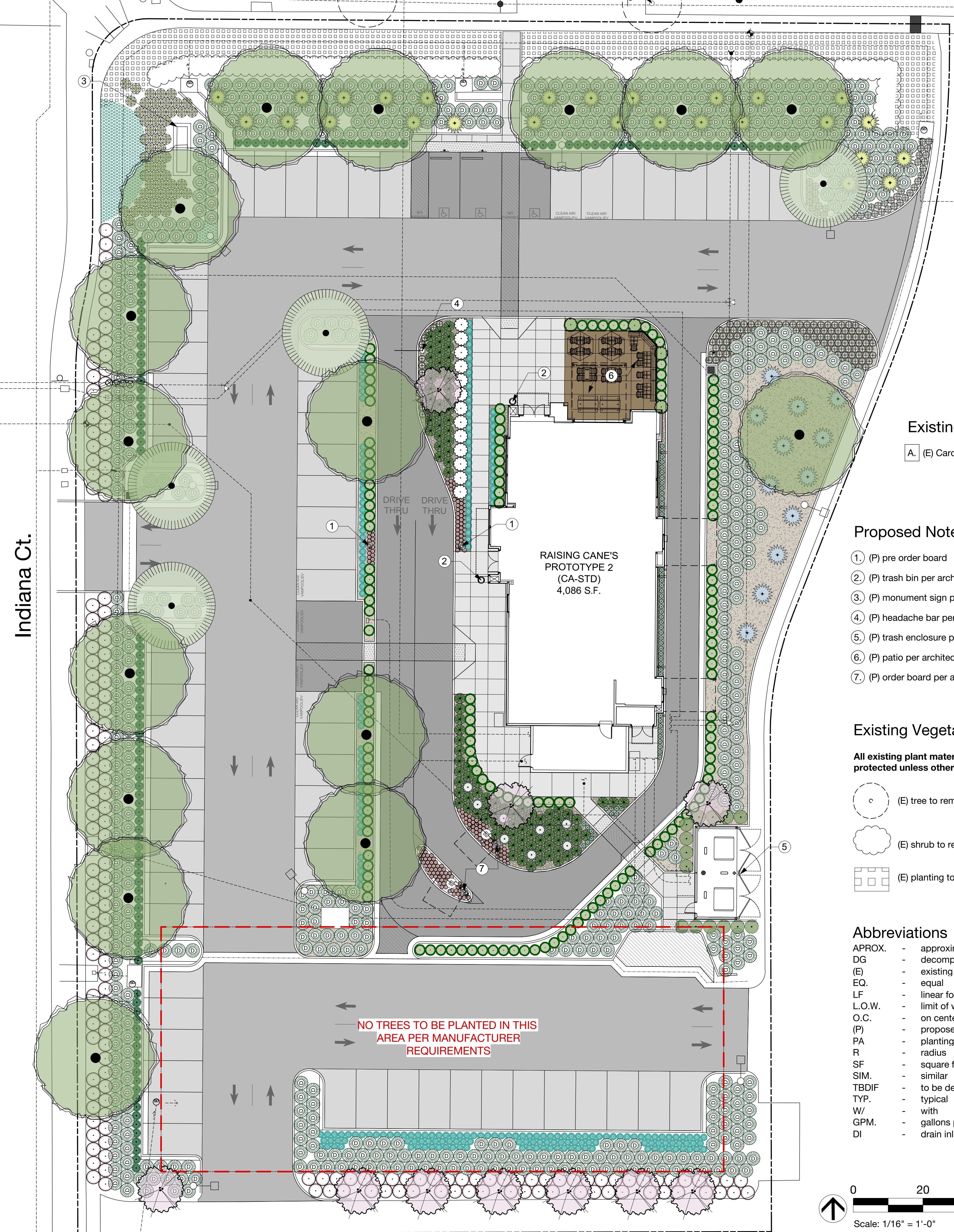
© 2019 Kiesel Landscape Architecture Inc. The design ideas and plans represented by these documents are the property of Kiesel Design. Use or copy is permitted by contract only. The use or revisions of these ideas or plans is prohibited without the written permission of Kiesel Design.

Title:
**Conceptual
Landscape Plan**

Sheet Number:

L1.1

Lugonia Ave.



Indiana Ct.

**RAISING CANE'S
PROTOTYPE 2
(CA-STD)
4,086 S.F.**

**NO TREES TO BE PLANTED IN THIS
AREA PER MANUFACTURER
REQUIREMENTS**

Plant List

Symbols	Botanical Name	Common Name	Size	Qty	Mature Height	Size Width	WUCOLS
Trees							
	<i>Cercidium x 'Desert Museum' (Multi)</i>	Desert Museum Palo Verde	36" box	4	25 ft	25 ft	Low
	<i>Lagerstroemia indica 'Catawba'</i>	Catawba Grape Myrtle	36" box	10	10 - 15 ft	12 - 20 ft	Med
	<i>Rhus lancea</i>	African Sumac	36" box	16	20-30ft.	> 35 ft.	Low
Shrubs							
	<i>Grevillea lanigera 'Costal Gem'</i>	Costal Gem Grevillea	5 gal	169	12 in	4 - 5 ft	Low
	<i>Rhamnus alaternus</i>	Italian Buckthorn	15 gal	14	12 - 16 ft	6 - 8 ft	Low
	<i>Rhaphiolepis umbellata 'Minor'</i>	Dwarf Yedda Hawthorn	15 gal	146	3 - 5 ft.	36 in. - 4 ft.	Low
	<i>Rosa x 'Iceberg' Floribunda Rose</i>	Iceberg Rose	5 gal	13	30 in - 3 ft	4 - 5 ft	Med
Perennials							
	<i>Dianella caerulea 'Cassa Blue'</i>	Blue Flax Lily	5 gal	57	12 - 18 in	12 - 18 in	Low
Succulents							
	<i>Aloe Safari Orange ['Andora']</i>	Safari Orange Aloe	5 gal	54	2 - 3 ft	3 - 4 ft	Low
	<i>Agave 'Blue Flame'</i>	Blue Flame Agave	5 gal	8	2 - 3 ft.	2 - 3 ft.	Low
	<i>Agave americana</i>	Century Plant	1 gal	12	4 - 8 ft.	6 - 12 ft.	Very Low
	<i>Aloe striata</i>	Coral Aloe	5 gal	153	2 - 3 ft.	1 - 2 ft.	Low
	<i>Echeveria 'Big Red'</i>	Big Red Hen & Chicks	5 gal	175	1 to 2 ft	1 to 2 ft	Low
	<i>Furcraea foetida 'Mediopicta'</i>	Giant False Agave	15 gal	28	4 - 5 ft.	6 - 8 ft.	Very Low
Grasses							
	<i>Carex divulsa</i>	European Grey Sedge	1 gal	136	24 - 30 in	24 - 30 in	Low
	<i>Festuca 'Siskiyou Blue'</i>	Siskiyou Blue Fescue	1 gal	224	2 ft.	2 ft.	Low
	<i>Lomandra longifolia 'Breeze'</i>	Dwarf Mat Rush	1 gal	105	2-4 ft	2-4 ft	Low
	<i>Muhlenbergia dubia</i>	Pine Muhly	1 gal	665	3 ft	3 ft.	Low
Total							
			1993				
Groundcover							
	<i>Senecio mandraliscae</i> @ 18" O.C. triangular spacing	Kleinia	1 gal	360 SF	1-2 ft	3-4 ft	Low

Existing Notes

- A. (E) Carob tree

Proposed Notes

- 1. (P) pre order board
- 2. (P) trash bin per architect
- 3. (P) monument sign per architect
- 4. (P) headache bar per architect
- 5. (P) trash enclosure per architect
- 6. (P) patio per architect
- 7. (P) order board per architect

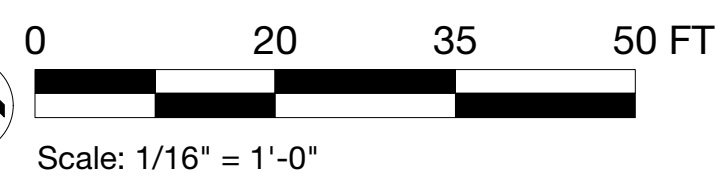
Existing Vegetation Notes

All existing plant material to remain and be protected unless otherwise noted.

- (E) tree to remain
- (E) shrub to remain
- (E) planting to remain

Abbreviations

- APROX. - approximate
- DG - decomposed granite
- (E) - existing
- EQ. - equal
- LF - linear foot
- L.O.W. - limit of work
- O.C. - on center
- (P) - proposed
- PA - planting area
- R - radius
- SF - square foot
- SIM. - similar
- TBDIF - to be determined in field
- TYP. - typical
- W/ - with
- GPM. - gallons per minute
- DI - drain inlet



Materials Legend

Material	Size	Area
Direct Colors® integral colored concrete W/ double bladed saw cut joints. Finish: Walnut® #649 or equal	N/A	642 SF
Stabilized decomposed granite in california gold	N/A	5,187 SF
Mexican Beach cobbles	2-3" DIA	2,060 SF
Natural colored concrete W/ double bladed saw cut joints	N/A	2,539 SF

*Integral Colored Concrete Supplier: Direct Colors <https://www.directcolors.com/>

Tree & Landscape Requirement Calculations per Predevelopment Findings

1. Trees with a trunk height of not less than six (6) feet shall be installed in the planters at each end of an aisle, at three (3) space intervals throughout the parking area, and at twenty (20) foot intervals along the periphery of the parking area.

of parking spaces: 68
of trees required: 22 (+ 8 trees at the end of aisles)
of trees proposed: 30

2. At least fifty percent (50%) of the trees shall be an evergreen variety and shall be evenly distributed throughout the parking area.

3. At least fifty percent (50%) of the trees shall be 15 gallon in size, twenty-five percent (25%) shall be 24-inch box in size, and twenty-five percent (25%) shall be 36-inch box in size. All trees shall meet the following minimum caliper sizes. If the caliper size cannot be met at the container size then the developer shall increase the container size to meet the required caliper.

15-gallon: 3/4" to 1"
24-inch box: 1/1/4" to 1-3/4"
36-inch box: 2/1/2" to 2-3/4"

4. Per Section EV4.0255 of the East Valley Corridor Specific Plan, a minimum of seven (7) percent of the total parking area must be landscape.

Total Site Area:	71,505 S.F.	100%
Building Area:	4,086 S.F.	5.6%
Impervious Area:	46,090 S.F.	64.6%
Parking Landscape Area:	11,028 S.F.	15.4%
Frontage Landscape Area:	10,301 S.F.	14.4%

The proposed Catawba Grape Myrtle trees on sheet, as illustrated along the southerly portion of the site plan, shall not affect the BMP basin once the trees mature.