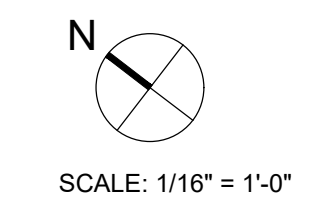


**PARTIAL ENLARGED SITE PLAN**



SCALE: 1/16" = 1'-0"

**REDLAND-BRANSON  
DEVELOPMENT, INC.**

12598 CENTRAL AVENUE, SUITE 212  
CHINO, CA 91710

THIS PLAN AND CONCEPT DRAWINGS ARE PROPERTY OF AMOR ARCHITECTURAL CORPORATION. THIS DRAWING IS LOANED WITHOUT OTHER CONSIDERATION THAN THE AGREEMENT AND CONDITION THAT IT IS NOT TO BE REPRODUCED, COPIED, OR OTHERWISE DISPOSED OF, DIRECTLY OR INDIRECTLY, AND IS NOT TO BE USED IN WHOLE OR IN PART TO ASSIST IN MAKING OR TO FURNISH ANY INFORMATION FOR THE MAKING OF DRAWINGS, PRINTS, APPARATUS OR PARTS THEREOF. THE ACCEPTANCE OF THIS DRAWING WILL BE CONSTRUED AS AN ACCEPTANCE OF THE FOREGOING CONDITIONS AND AS AN ADMISSION OF THE EXCLUSIVE OWNERSHIP OF THE PLAN AND CONCEPT DRAWINGS OF AMOR ARCHITECTURAL CORPORATION. THIS IS A CONCEPTUAL PLAN ONLY AND IS SUBJECT TO CHANGES. AMOR ARCHITECTURAL CORPORATION MAKES NO WARRANTY NOR REPRESENTATION TO ITS ACCURACY.

A1901

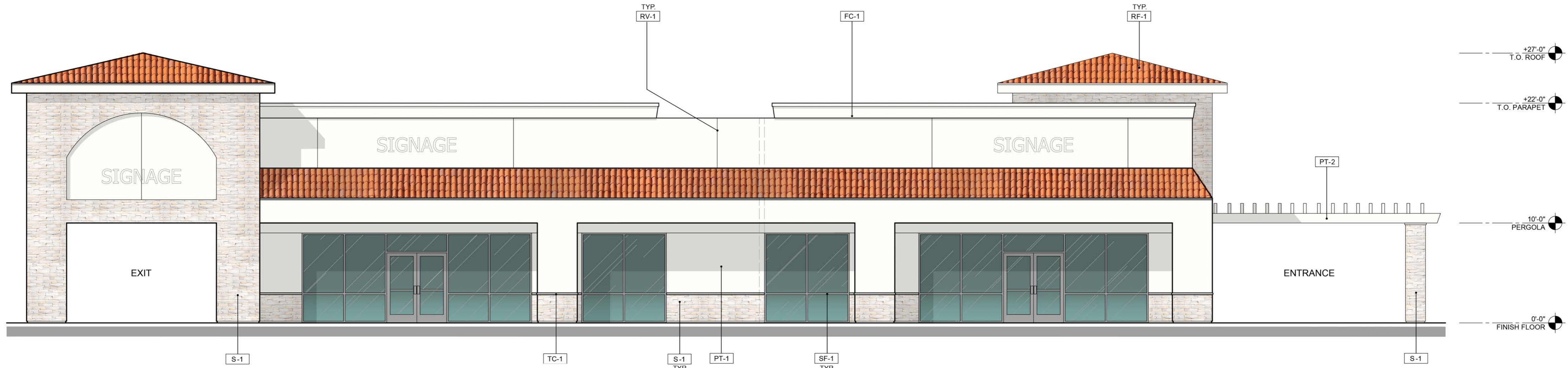
**PAD 'J'**  
**BROOKSIDE PLAZA**  
1524 BARTON ROAD  
REDLANDS, CA

2019.11.04

9483 HAVEN AVENUE, SUITE 100  
RANCHO CUCAMONGA, CA 91730  
909.259.9971 TEL.  
909.944.8409 FAX.  
WEST COAST | CENTRAL | EAST COAST  
www.AmorArch.com



**A1.2**

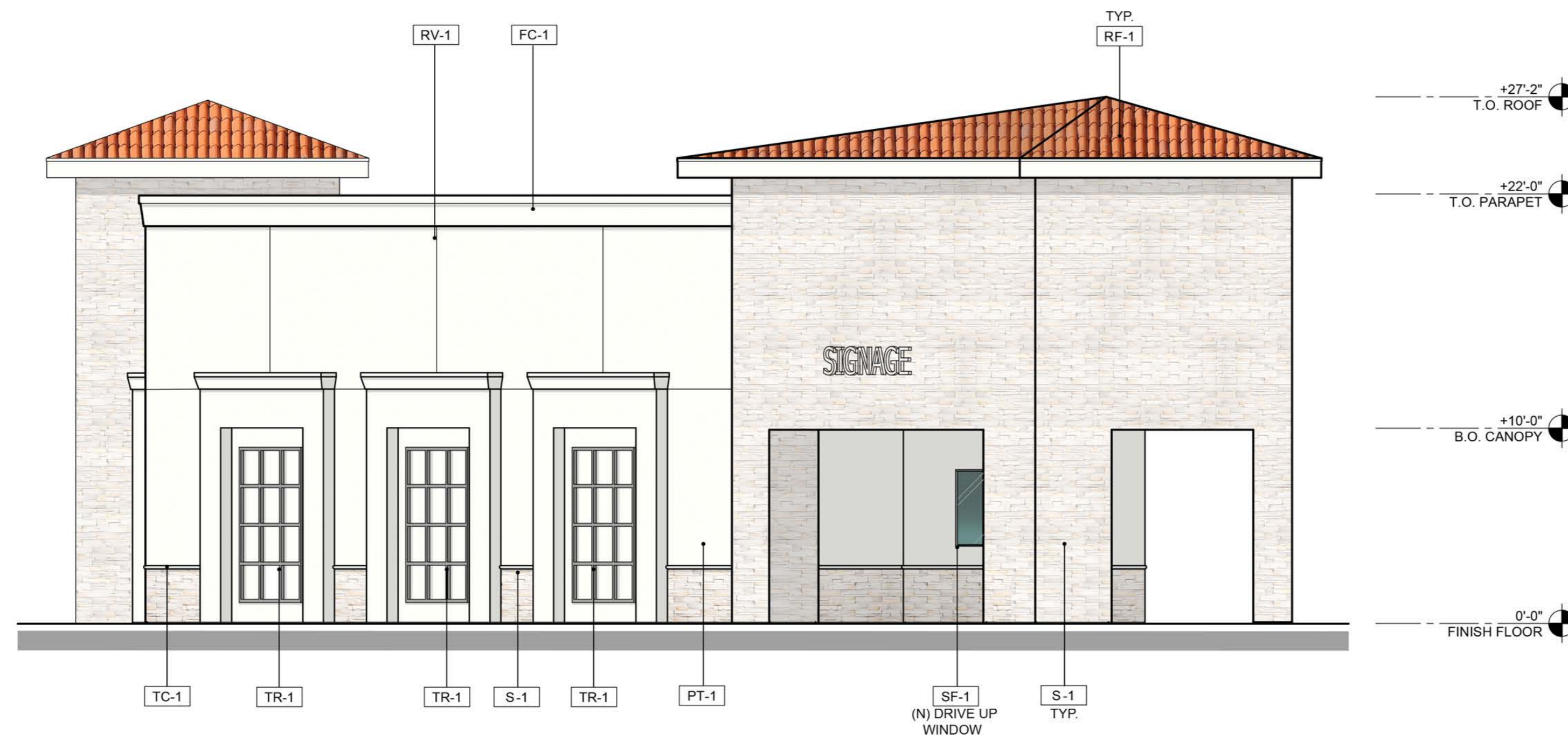


EXTERIOR ELEVATION - NORTH (FRONT - FACING PARKING)

SCALE  
3/16" = 1'-0" A

LEGEND - EXTERIOR FINISHES

- FC-1 DECORATIVE FRAMED CORNICE
- PT-1 PAINTED STUCCO - COLOR: PPG1086-1 HORSERADISH
- RV-1 3/4" HORIZONTAL / VERTICAL REVEAL
- SF-1 ALUMINUM STOREFRONT - CLEAR ANODIZED
- TC-1 TOP CAP - COLOR TO MATCH STACKED STONE
- TR-1 TUBE STEEL GARDEN WALL TRELLIS
- S-1 STACKED STONE
- RF-1 ROOF TILE TO MATCH EXISTING
- PT-2 WOOD TRELLIS - COLOR: PPG1086-1 HORSERADISH



EXTERIOR ELEVATION - EAST

SCALE  
3/16" = 1'-0" B

**REDLAND-BRANSON  
DEVELOPMENT, INC.**

12598 CENTRAL AVENUE, SUITE 212  
CHINO, CA 91710

THIS PLAN AND CONCEPT DRAWINGS ARE PROPERTY OF AMOR ARCHITECTURAL CORPORATION. THIS DRAWING IS LOANED WITHOUT OTHER CONSIDERATION THAN THE AGREEMENT AND CONDITION THAT IT IS NOT TO BE REPRODUCED, COPIED, OR OTHERWISE DISPOSED OF, DIRECTLY OR INDIRECTLY, AND IS NOT TO BE USED IN WHOLE OR IN PART TO ASSIST IN MAKING OR TO FURNISH ANY INFORMATION FOR THE MAKING OF DRAWINGS, PRINTS, APPARATUS OR PARTS THEREOF. THE ACCEPTANCE OF THIS DRAWING WILL BE CONSTRUED AS AN ACCEPTANCE OF THE FOREGOING CONDITIONS AND AS AN ADMISSION OF THE EXCLUSIVE OWNERSHIP OF THE PLAN AND CONCEPT DRAWINGS OF AMOR ARCHITECTURAL CORPORATION. THIS IS A CONCEPTUAL PLAN ONLY AND IS SUBJECT TO CHANGES. AMOR ARCHITECTURAL CORPORATION MAKES NO WARRANTY NOR REPRESENTATION TO ITS ACCURACY.

A1901

**PAD 'J'**  
**BROOKSIDE PLAZA**  
1524 BARTON ROAD  
REDLANDS, CA

2019.11.04

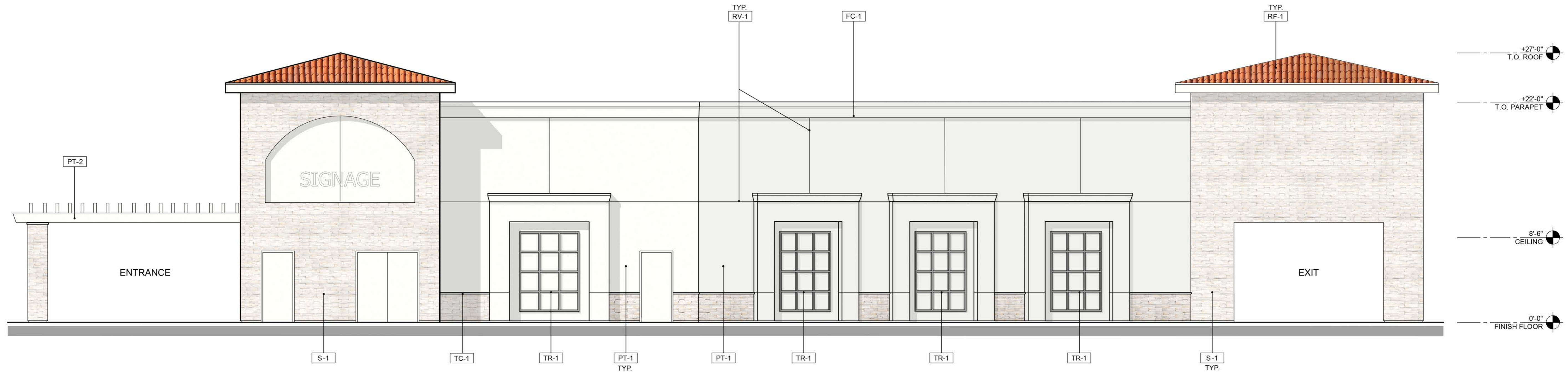
9483 HAVEN AVENUE, SUITE 100  
RANCHO CUCAMONGA, CA 91730

909.259.9971 TEL.  
909.944.8409 FAX.

WEST COAST | CENTRAL | EAST COAST  
www.AmorArch.com

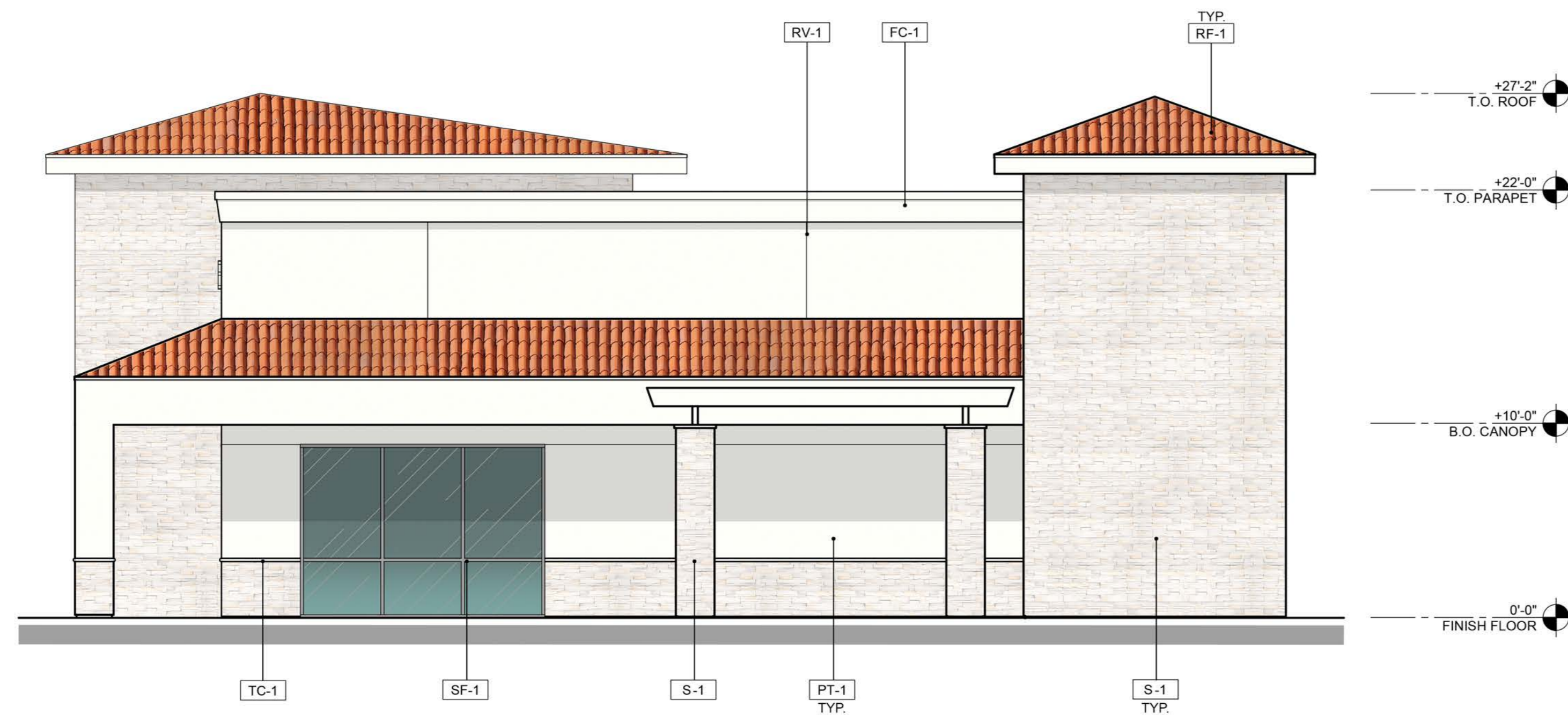


**A4.1**



EXTERIOR ELEVATION - SOUTH (REAR - FACING BARTON ROAD)

SCALE  
3/16" = 1'-0" C



EXTERIOR ELEVATION - WEST

SCALE  
3/16" = 1'-0" D

LEGEND - EXTERIOR FINISHES

- FC-1 DECORATIVE FRAMED CORNICE - COLOR: PPG1086-1 HORSERADISH
- PT-1 PAINTED STUCCO - COLOR: PPG1086-1 HORSERADISH
- RV-1 3/4" HORIZONTAL / VERTICAL REVEAL
- SF-1 ALUMINUM STOREFRONT - CLEAR ANODIZED
- TC-1 TOP CAP - COLOR TO MATCH STACKED STONE
- TR-1 TUBE STEEL GARDEN WALL TRELLIS
- S-1 STACKED STONE
- RF-1 ROOF TILE TO MATCH EXISTING
- PT-2 WOOD TRELLIS - COLOR: PPG1086-1 HORSERADISH



**REDLAND-BRANSON  
DEVELOPMENT, INC.**

12598 CENTRAL AVENUE, SUITE 212  
CHINO, CA 91710

THIS PLAN AND CONCEPT DRAWINGS ARE PROPERTY OF AMOR ARCHITECTURAL CORPORATION. THIS DRAWING IS LOANED WITHOUT OTHER CONSIDERATION THAN THE AGREEMENT AND CONDITION THAT IT IS NOT TO BE REPRODUCED, COPIED, OR OTHERWISE DISPOSED OF, DIRECTLY OR INDIRECTLY, AND IS NOT TO BE USED IN WHOLE OR IN PART TO ASSIST IN MAKING OR TO FURNISH ANY INFORMATION FOR THE MAKING OF DRAWINGS, PRINTS, APPARATUS OR PARTS THEREOF. THE ACCEPTANCE OF THIS DRAWING WILL BE CONSTRUED AS AN ACCEPTANCE OF THE FOREGOING CONDITIONS AND AS AN ADMISSION OF THE EXCLUSIVE OWNERSHIP OF THE PLAN AND CONCEPT DRAWINGS OF AMOR ARCHITECTURAL CORPORATION. THIS IS A CONCEPTUAL PLAN ONLY AND IS SUBJECT TO CHANGES. AMOR ARCHITECTURAL CORPORATION MAKES NO WARRANTY NOR REPRESENTATION TO ITS ACCURACY.

A1901

**PAD 'J'**  
**BROOKSIDE PLAZA**  
1524 BARTON ROAD  
REDLANDS, CA

2019.11.04

9483 HAVEN AVENUE, SUITE 100  
RANCHO CUCAMONGA, CA 91730  
909.259.9971 TEL.  
909.944.8409 FAX.  
WEST COAST | CENTRAL | EAST COAST  
www.AmorArch.com



**A0.1**

